

The ATTIC Children's
Museum serves many
populations of the Blackstone
Valley Community;

Area elementary schools

Home-school parents

At-home daycare providers

Families with young children

Admission \$1/person—Call for Hours
Group rates available with special hours.
Birthday Party Options too.



For more information contact:

Karin Knapik
Office of the Superintendent
21 S. Main Street
Uxbridge, MA 01569
Phone: 508.278.0553
Email: kknapi@uxbridge.k12.ma.us
Visit Us Online at:
www.uxbridgeschools.com

*The **Imagination Station** (formally Explore
and Discover) is funded in part by:*

- Massachusetts Department of Education
- Blackstone Valley Chamber of Commerce
- Massachusetts Cultural Council
- Individual Donors



The ATTIC Children's Museum

*An interactive museum
for kids, by kids*



**Located at the Bernat Mill
15 Depot Street, off Rt. 16
Uxbridge Massachusetts**

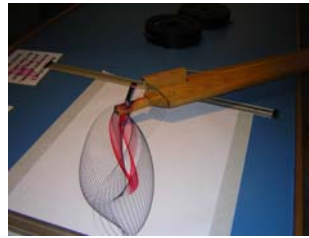
*A Component of the
Imagination Station
through the
Uxbridge Public Schools*

Our Mission

The Attic Children's Museum, a component the Imagination Station, is a Community

Service Learning program providing enrichment for pre-kindergarten through Grade 12. The various components of the program support the implementation of the Massachusetts State Curriculum Frameworks in math, science, art, technology, health, history and the National Family and Consumer Sciences Content Standards. The methods employed include the following:

- *Bringing students, teachers, parents and community members together to plan and create learning environments that enrich and inspire*
- *Providing opportunities for advanced play, exploration and inquiry*
- *Fostering a community of life long learners*
- *Providing exemplary classroom resources in the form of curriculum related exhibits and support materials*
- *Creating a dynamic, rich and sustainable partnership between cultural institutions, schools and community resources.*



The Museum

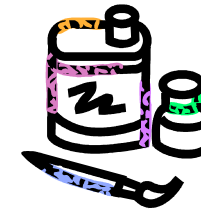
High School students enrolled in the *Imagination Station* class have the opportunity to work with artists and teachers to conceptualize and create interactive exhibits, activities, murals and sculptures for The Attic Children's Museum and elementary classrooms. High School students staff the museum and serve as student teachers for patrons, assisting and enhancing the museum experience.

Exhibits explore topics in science, art, math, technology, history of the region, health and human perspective.



Plan a Visit

The Attic Children's Museum is available for field trips to any elementary school. Our hours are flexible and fees reasonable (see attached fee schedule). Visitors should plan at least an hour for a regular visit and more if



additional activities or a trip to the Visiting Artist Studio is



How to Get Here

Located on Rt. 16, just east of the intersection of Rt. 16 and Rt. 122, we are just past St. Mary's Church on the left (coming from the east) or just past Lynch's on the right (coming from the west). Look for the mosaics and enter between the brick pillars. We are straight ahead—above the Youth Center.

